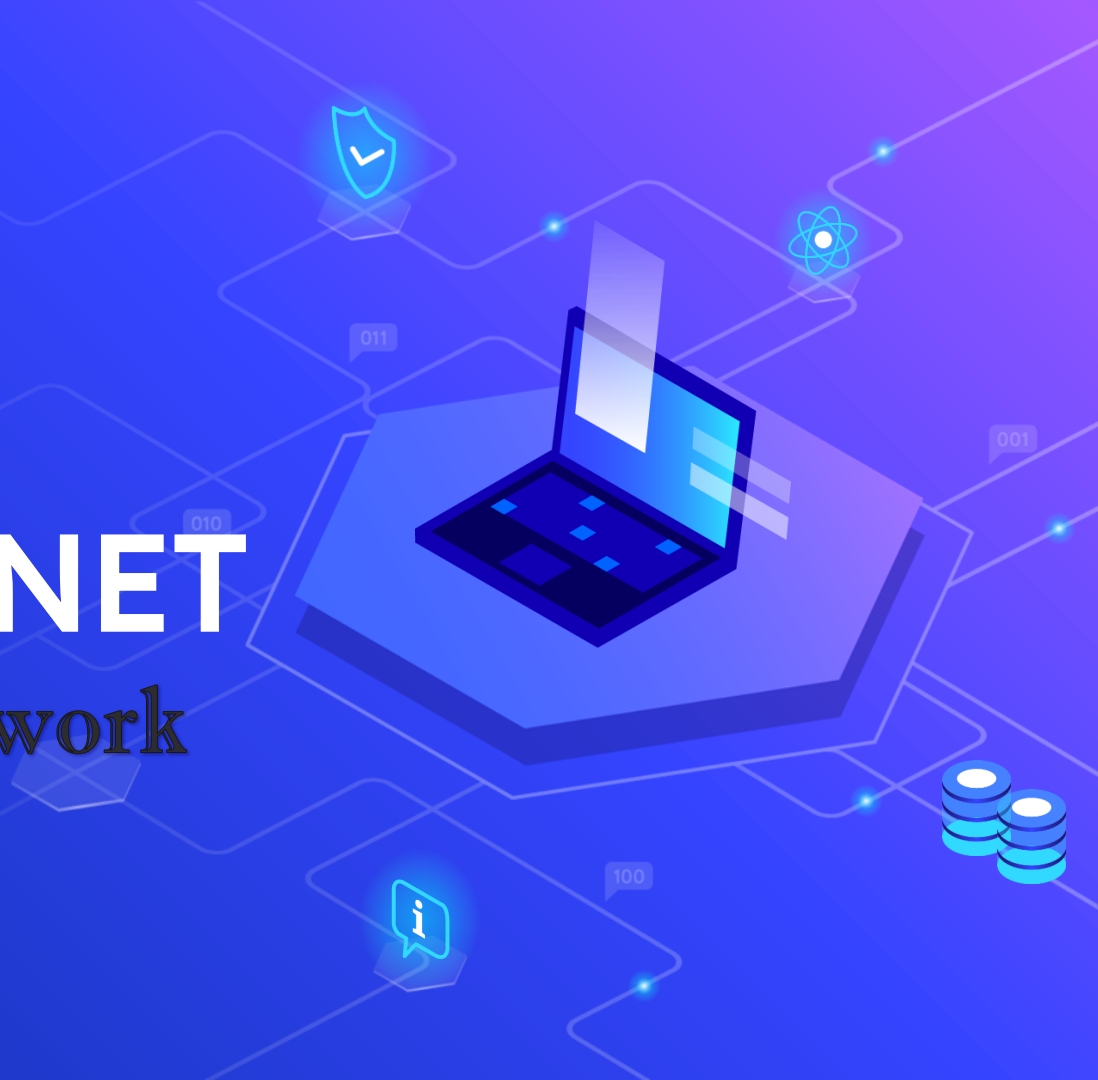




TunapandaNET

Community Network



“Connecting the
Unconnected...

#internetforeveryone



TUNAPANDANET -INTRO

- ❖ We are A community network in Kibera championed by Tunapanda Institute.
- ❖ We operate to bridge the digital divide in the community.
- ❖ We support digital growth and literacy- connect and empower!



OUR MODEL

Community Special Groups

Women Group Organizations,
Youth Groups Organizations,
Special interest Groups
(Childrens Homes)

2



1

Community-Based Organizations and NGOs

HEALTH CENTRES, FOR-
PROFIT ORGs, INSTITUTIONS
E.T.C

011

Learning Institutions

3

Community Based Schools,
Community Learnig Hubs,
Primary & Secondary
Schools.

010

TUNAPANDANET SERVICES

- ⬡ Internet as a Service (IaaS) - Reliable & Affordable internet to the community.
- ⬡ Platform as a Service (PaaS) – E-learning platform.
- ⬡ Capacity Building as a Service- Digital literacy awareness and training for the community.
- ⬡ Content Creation and Development.- Locally relevant content with, by and for the community.

Big Concept

Promote Equal Digital
Opportunities for Everyone...



TOOLS & TECHNOLOGIES

LOGICAL TOOLS

Tools and technologies we use to accomplish our mission.

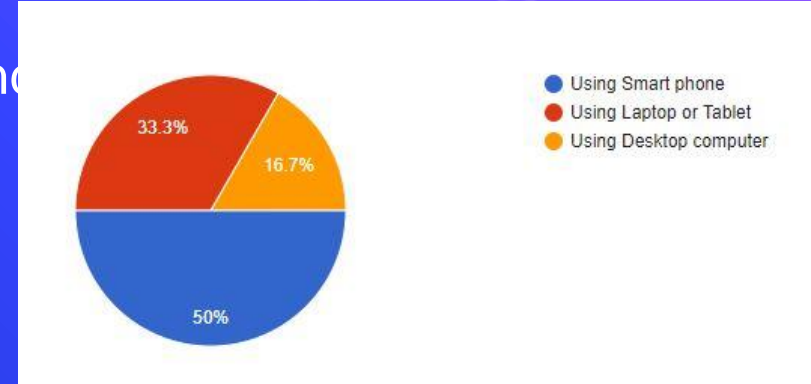
- ❖ E-Learning platforms
 - Host and promote information/content for the community.

TECHNICAL TOOLS

- ❖ Network monitoring and Management tools.
 - Ubiquiti Networking Tool (link) – UNMS
 - Iperf tool – Traffic analysis
 - The Dude – Mkirotik Tool

ToolKit Gaps

- Efficient Network monitoring, Billing, and management tools.
- Captive portals / Hotspot systems.
- Mobile Based E-Learning Platform to reach the bigger half.



Thanks!

Any questions?

Alphonse Odhiambo.

LinkedIn: [linkedin.com/in/eng-alphonse](https://www.linkedin.com/in/eng-alphonse)

Email: alphonce@tunapanda.org

